

DEFINITION

What is a Watershed?

A simple and complex system existing within boundaries

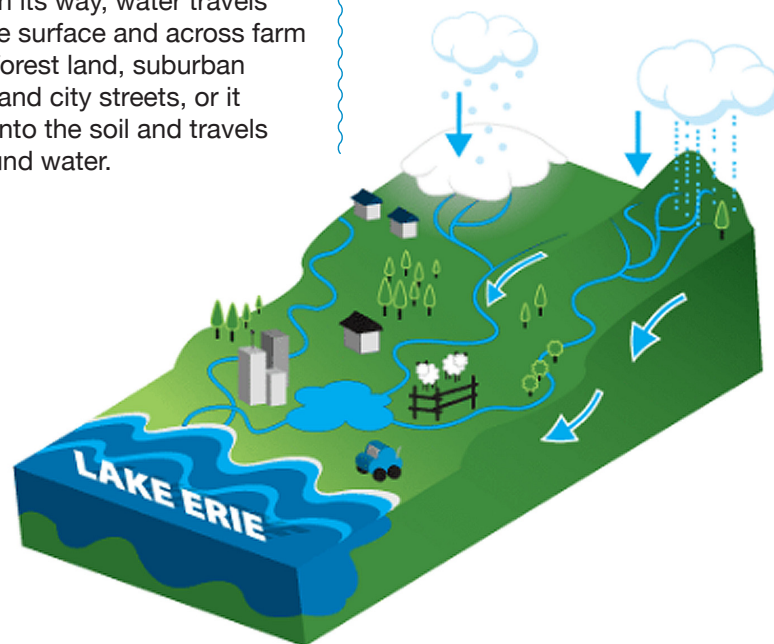
1 A watershed is simply the land that water flows across or under on its way to a stream, river, or lake.

Our landscape is made up of many interconnected basins or watersheds. Within each watershed, all water runs to the lowest point – a stream, river, or lake. On its way, water travels over the surface and across farm fields, forest land, suburban lawns, and city streets, or it seeps into the soil and travels as ground water.

2

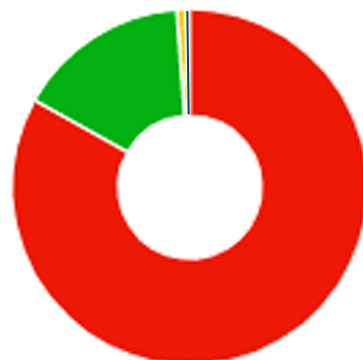
A Watershed is Also a System

It is a complex system of interactions between the land, water, plants, animals, and man-made elements that exist within its boundaries. Those interactions clean the water and support the habitat that, in turn, supports life.



Watershed at a Glance

- **Developed**
83.10%
- **Forest** 15.70%
- **Grass/Pasture**
0.80%
- **Other** 0.40%



Causes of Watershed Impairment:

- Organic enrichment
- Flow regime modification
- Habitat alterations
- Pollutants in urban stormwater

OUTREACH

Learn More

If you would like to learn more about your watershed or how to improve it, visit the following websites:

- <https://www.clevelandmetroparks.com/>
- <http://cuyahogawcd.org/>
- <https://www.neorsd.org/>
- www.westcreek.org

Get Involved

We could use your help to improve our watershed. If you're interested in adopting conservation practices or volunteering, contact:

West Creek Conservancy
216.749.3720 or
info@westcreek.org



This publication was prepared by the West Creek Conservancy in partnership with watershed stakeholders and available up to date applicable data.

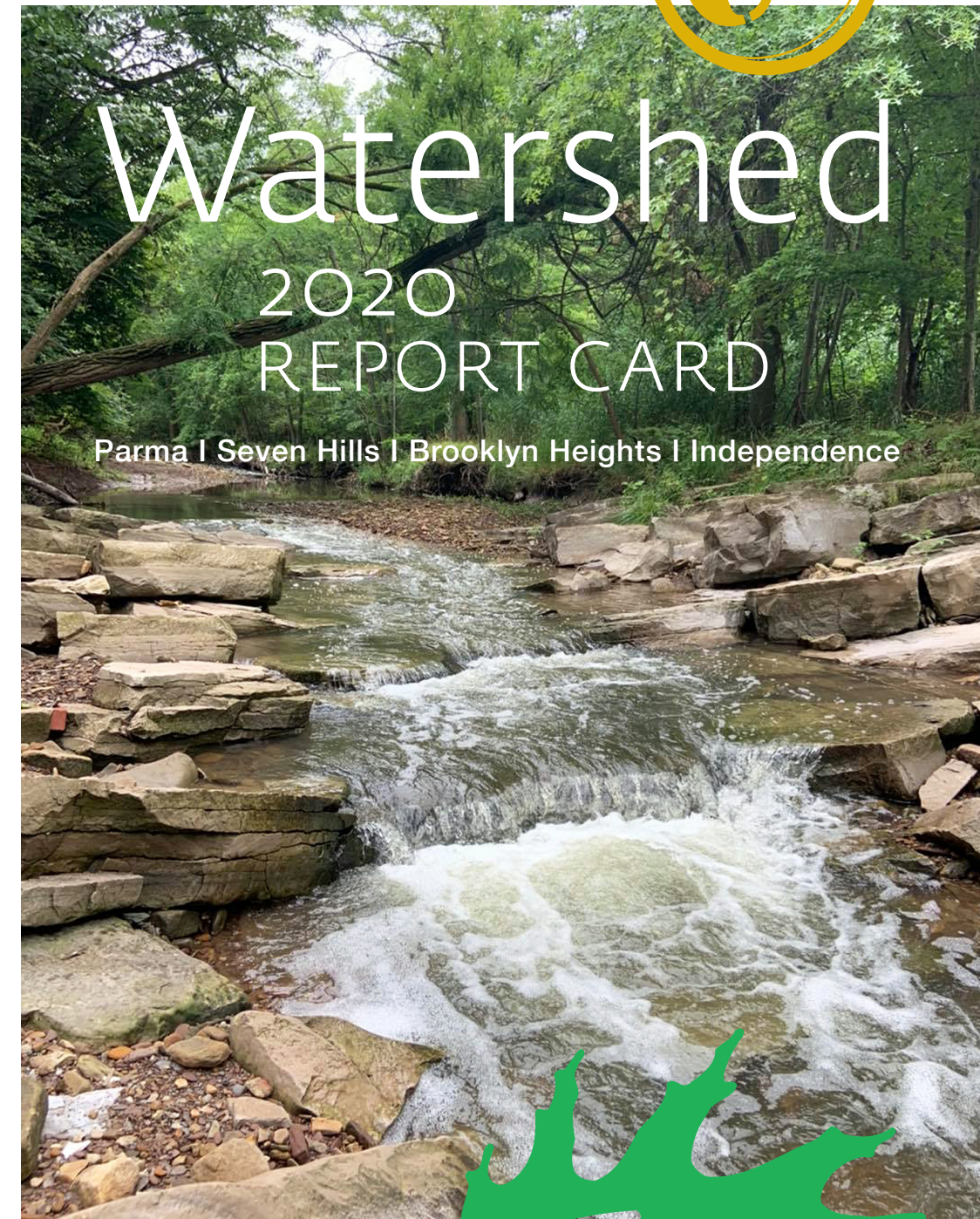
The statements, findings, conclusions, and recommendations are those of the author(s) and are to be utilized for both educational and planning needs.

It is not a formal Water Quality Report though the data used is the most up to date information available for the most accurate scoring.



P.O. Box 347113, Cleveland Ohio 44134
216.749.3720 (office)
216.749.3730 (fax)
email: info@westcreek.org, www.westcreek.org

WEST CREEK



REPORT CARD

West Creek Watershed

Location and Details

West Creek Watershed

Within the Cuyahoga County-
Spanning 4 communities

Location

Parma, Seven Hills,
Brooklyn Heights, Independence

Drainage

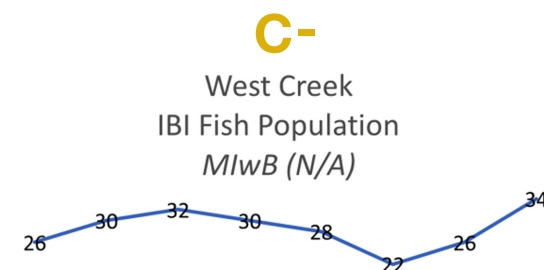
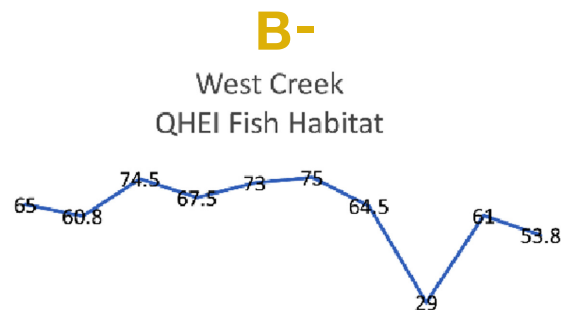
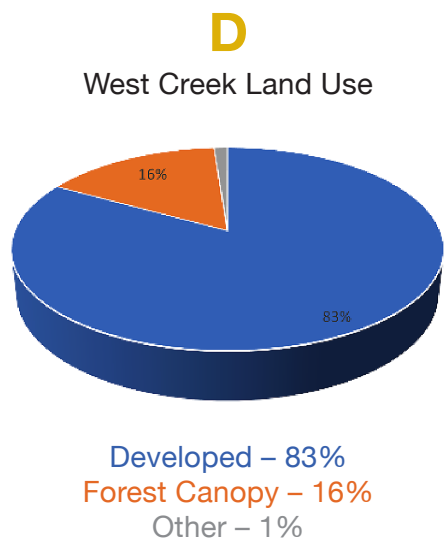
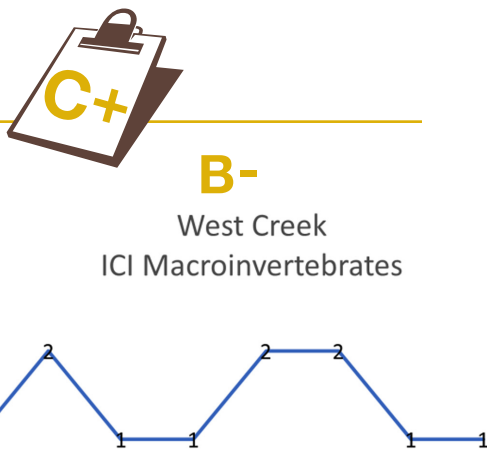
14 square miles

Length

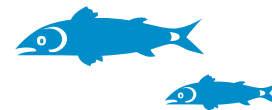
9 miles (main stem)

Overall Grade: C+

West Creek Scores:



Grading Criteria Aquatic Life Use Metrics



Based on the mechanism designed for the Water Quality Criteria Ranges in our region used by the EPA. Below is a scoring for applicable "Bioindicators" of healthy streams. Also included: Land Use Types.

Habitat:

- QHEI: **A** 70+, **B** 55-69, **C** 43-54, **D** 30-42, **F** 30-

Fish Population:

- IBI: **A** 46-50, **B** 38-45, **C** 28-37, **D** 18-27, **F** 17-
- MIWB: **A** 9.4+, **B** 8.9-9.3, **C** 7.4-8.8, **D** 5.9-7.3, **F** 5.8-

Macroinvertebrates:

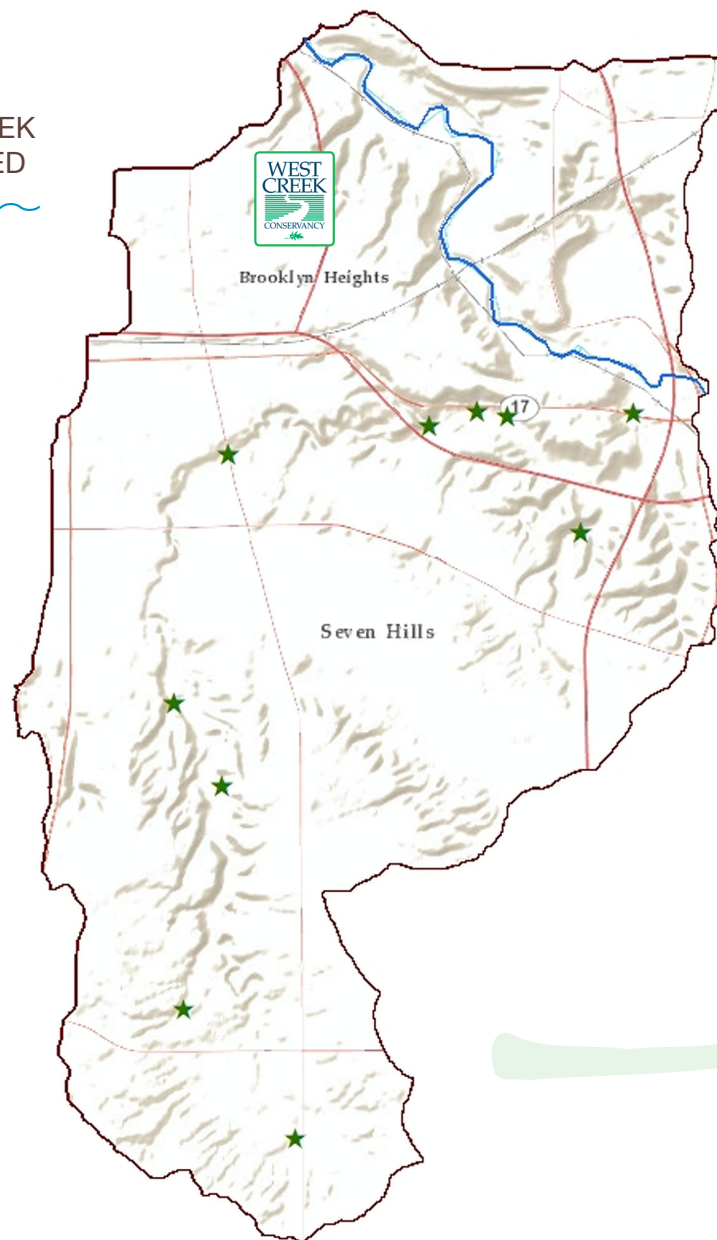
- ICI: **A** 46-60, **B** 39-44, **C** 30-38, **D** 14-29, **F** 13-
- ICI (Narrative Score): **A** (1) Yes **C-** (2) No

Land Use:

- Percent Developed: **A** 20%- **B** 40% **C** 60% **D** 80% **F** 90%+
- Forest Cover: **A** 50%+ **B** 40% **C** 30% **D** 20% **F** 10%

WEST CREEK WATERSHED

★
Ohio EPA
Sampling
Points



COMMUNITY IMPACT

How this Impacts You

Keeping our sources of water clean and healthy

We often don't think about the water flowing through our communities. Our daily interaction with water typically comes from our faucets. Clean, clear water for drinking, watering, or washing, we usually take for granted.

Lake Erie provides yours and 11 million other homes with running water. When our streams become "dirty" with an overabundance of sediment, nutrients, or bacteria, those pollutants make it to our lake and our drinking source.

Water treatment plants become overwhelmed with the amount of pollutants entering the system. Yes, we can remove these pollutants, but the dirtier the

water the more treatment that needs to be done to make our water safe for drinking. This can cost a lot of money. The upgrades to our plants and additional cost of treatment is something we all pay for. We can reduce these costs by preventing pollutants from entering our waters in the first place.

In the West Creek Watershed, the water flowing into the creek is heavily loaded with nutrients, sediment, and other pollutants from yards, homes, and parking areas. This only exponentially increases when it rains. Bottom line, we need to improve how we take care our land and streams.



What You Can Do!

- Plant more native and pollinator plants in your yard
- Install a rain garden or rain barrel at home
- Pick up pet waste
- Use natural cleaners in your home
- Try making your own backyard compost bin
- Follow the "4Rs" of fertilizer use:
Right source, Right amount, Right place, and Right time
- Pick up litter in your neighborhood or nearby stream
- Leave living woody vegetation along a stream or ditch